



# FEFPEB:

the voice of the European wooden  
pallet and packaging industry





# FEFPEB: Eight decades of leadership

The Fédération Européenne des Fabricants de Palettes et Emballages en Bois (FEFPEB) - the European Federation of Wooden Pallet and Packaging Manufacturers – has been the heart of the European wooden pallet and packaging industry since 1947.

FEFPEB:

- Represents its membership in Europe and globally.
- Promotes and protects the role of wooden pallets and packaging with lobbying and communications.
- Works with the EU to shape legislation including ISPM15 and packaging waste regulations.
- Supports innovation and research in the supply chain.
- Facilitates industry networking and education through its newsletters, PR, and annual membership meetings.

## A global network

The businesses in FEFPEB’s network manufacture well over half a billion wooden pallets, and repair approximately a quarter of a billion more every year for reuse.

FEFPEB also includes European pallet pools (CHEP, EPAL, IPP Logipal, LPR, and PRS), who together own, repair, and trade more than a billion timber pallets worldwide.

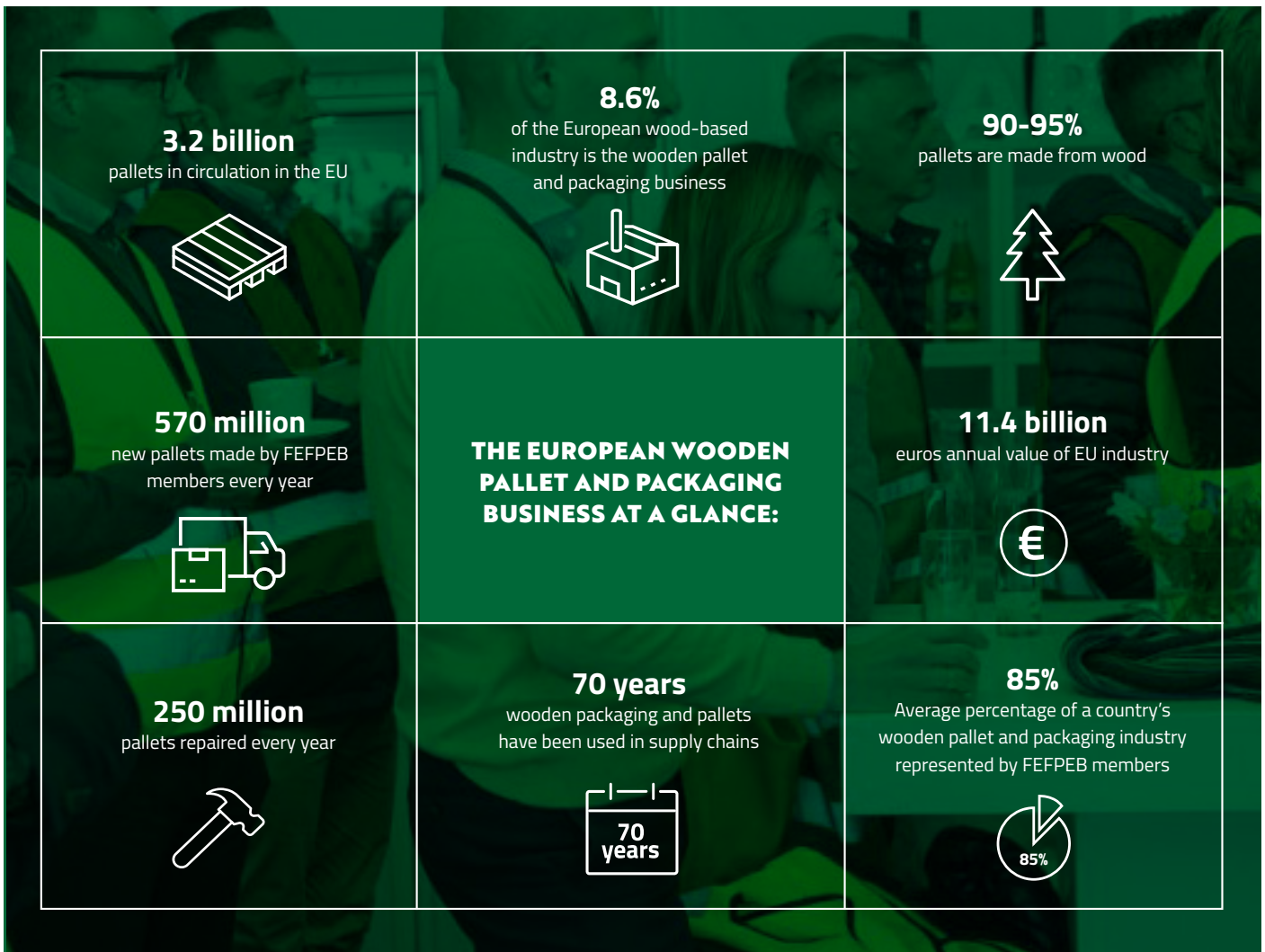


FEFPEB is the foremost association championing Europe's leading organisations for wooden pallet and packaging, representing their interests on the international stage. It provides regular networking and social opportunities, bringing together the most influential people in our business, and helping shape the policies that impact on our sector.

The wood pallet and packaging industry is naturally based on principles of renewability, a fact increasingly recognised by policymakers as they work to develop truly circular economies for the future. Promoting our credentials in this area is another of FEFPEB core missions.

**Rob van Hoesel, FEFPEB President**





“The EU economy could not function without wooden packaging and pallets, which have a key strategic role to play in the supply chains for most goods.

FEFPEB’s committees make key decisions affecting the operation of these supply chains in Europe and across the world. They are instrumental in promoting the industry and representing it to EU legislators.

Packaging and pallets made from wood are the best choice for the environment, employment, and the economy. We are dedicated to making businesses and consumers aware of this.”

**Michael Modugno,**  
FEFPEB Committee Member

“Sponsoring and attending FEFPEB events gives us access to many international customers and continually expands our network across the industry.

Guest membership of this essential organisation keeps us well informed about current developments in the wood packaging sector and allows us to actively participate in shaping guidelines and standards that affect our business. As part of the FEFPEB network, we share experiences and best practices with other industry players, learning from them to continuously improve our own products and services.”

**Leonhard Scherer,**  
Euroblock, FEFPEB Sponsor

“With the production and use of wooden packaging governed by rules set at the European and international level, it is crucial for associations representing the industry across Europe to collaborate closely. FEFPEB facilitates this, ensuring that these rules are fair and do not restrict competitiveness or profitability.

FEFPEB meetings and events also provide excellent opportunities for networking between producers, suppliers, and association executives.”

**Filip de Jaeger,**  
Fedustria (Belgium), FEFPEB Member Association

The 71st FEFPEB congress takes place in Ostend from 25 to 27 September 2024.



# Our industries

## Pallet manufacturing and repair

Pallet are flat wooden structures used for handling, transporting, or storing goods – such as grocery products, pharmaceuticals, drinks, or other high value items.

Pallets make up around 70 per cent of total wooden packaging production in Europe.

The wooden pallet supply chain is made up of:

- Manufacturers
- Repairers
- Importers
- Distributors
- Poolers

Manufacturers mainly sell pallets directly to customers, while pallet poolers rent pallets to users and provide related services, including collection, inspection, reconditioning, and repair.

There are more than 3,000 pallet manufacturers with approximately 80,000 employees in FEFPEB countries. A further 300,000 employees work in businesses including repairing and trading pallets.

Pallet repairers extend the lifespan of pallets by repairing or reconditioning them for reuse in supply chains. Reuse is generally increasing across Europe.

## Industrial packaging

Industrial wooden packaging is usually produced on a bespoke basis for the protection of larger or irregularly shaped goods.

They can be used to items from works of art and furniture to vehicles and machinery.

This packaging is generally not reusable – although it can often be repurposed and recycled.



FEFPEB estimates there are more than 800 companies producing industrial wooden packaging across the EU.

## Lightweight packaging (LWP)

Lightweight wooden crates and boxes are generally made for horticultural products, such as fresh fruits and vegetables and cheese.



Advantages include:

- Robustness
- Flexibility
- Fast-cooling properties
- Water resistance

Wood has proven antibacterial properties, which make it particularly well suited to use with food products.

There are several hundred lightweight packaging manufacturers in the EU, with the majority being SMEs located mainly in France, Germany, Italy, Portugal, and Spain. They produce an estimated one billion units every year.

## Pallet pooling

Pallet pools allow companies to rent pallets instead of buying them or buy and sell them on for reuse.

Open pallet pools:

- Pallets owned by the manufacturer.
- Transferred to the customer as part of buying goods.



- Customer exchanges them for the same number of empty pallets of equivalent value or sold on.

Closed pallet pools:

- Third-party companies own and manage the pallets - and provide other logistics services.
- Delivers the number of pallets needed to manufacturers, who loads and ships them.
- The pooling company collect empty pallets and take them to the closest regional centre.
- Can be small, national pools, for given supply chains, or large international networks.



## Contact FEFPEB

For more information about FEFPEB membership or sponsorship, please contact FEFPEB Secretary General Fons Ceelaert at: [info@fefpeb.eu](mailto:info@fefpeb.eu)

### Postal address:

Postbus 4076, 5004 JB Tilburg,  
The Netherlands

### Main address:

Reitseplein 1, 5037 AA Tilburg,  
The Netherlands

 +31 013-594 48 02

 [www.fefpeb.eu](http://www.fefpeb.eu)

